

# Creation of custom patterns for the MBJ Patternlight

## Data delivery of Custom Pattern

### Possible data formats

- .dxf-Data  
Please use the template on our website [www.mbj-imaging.com](http://www.mbj-imaging.com) for your file.  
The arrows in the template mark the bottom edge and should not be overwritten or removed.

### Pattern size

- Max. diagonal of 11 mm

### Line width/line thickness

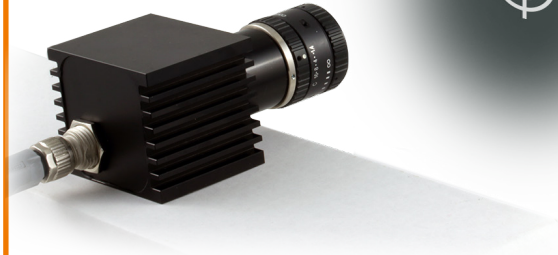
- Min. 150  $\mu\text{m}$

### Geometric accuracy

- 50  $\mu\text{m}$

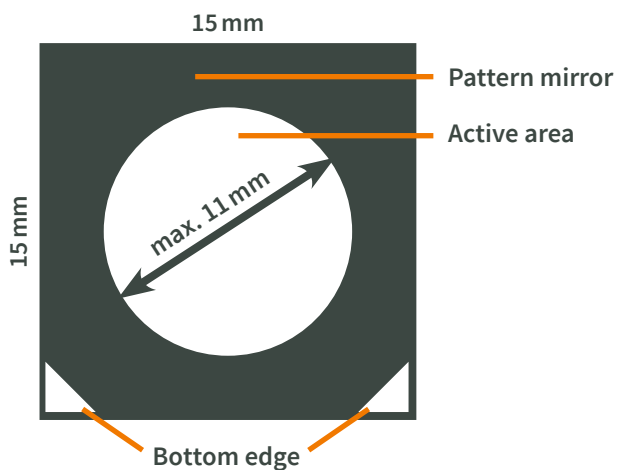
### Create pattern

- White elements represent the projected pattern (white allows light to pass, black blocks light)

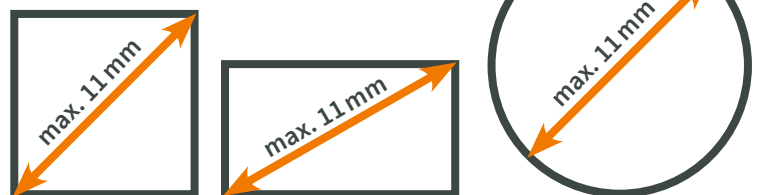


### Pattern size

- Maximum diagonal of 11 mm



### Examples:



### Object colors

- White elements represent the projected pattern (white allows light to pass, black blocks light)

