

Kamerakabel-TLi Basler ace/GigE

Artikel-Nr.: 00213.00



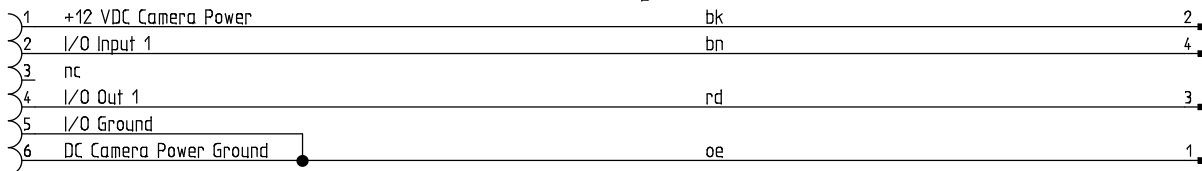
A

A

Kabelmarkierung einseitig:
00213.00

Leitung 4x0,22, schwarz
Kabeltronik 095042409
Länge 200mm Mantel zwischen den Steckern

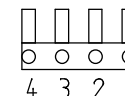
Hirose Stecker 6pol.
HR10A-7P-6S



Steckbare Schraubklemme 4Pol RM3,81
Teile-Nr. MC 1,5/4-ST-4,81

Pin	Designation
1	+12 VDC Camera Power
2	I/O Input 1
3	Not Connected
4	I/O Out 1
5	I/O Ground
6	DC Camera Power Ground

Table 3: Pin Assignments for the 6-pin Receptacle



Auf die Schraubklemmen gesehen

The pin numbering for the 6-pin receptacle is as shown in Figure 12.

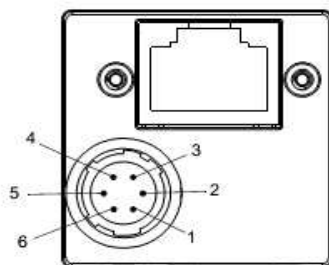


Fig. 12: Pin Numbering for the 6-pin Receptacle

F

F

previous page:							supplier	project description	page description	next page:		
status	changes	date	name	project name	date	name		Kamerakabel-TLi Baster ace/GigE	Kamerakabel Ace GigE	proj.-no.:	equipm.:	
		04.09.2014			06.02.2014	V.Bie				00213.00 Kamerakabel-TLi Baster ace-GigE	location:	
				checked				Ers.f	Ers.d	drawing.-no.:	page:	1
				guidline							of	1